



Water Softeners



CWS-25 & CWS-40

CWS-25/CWS-40

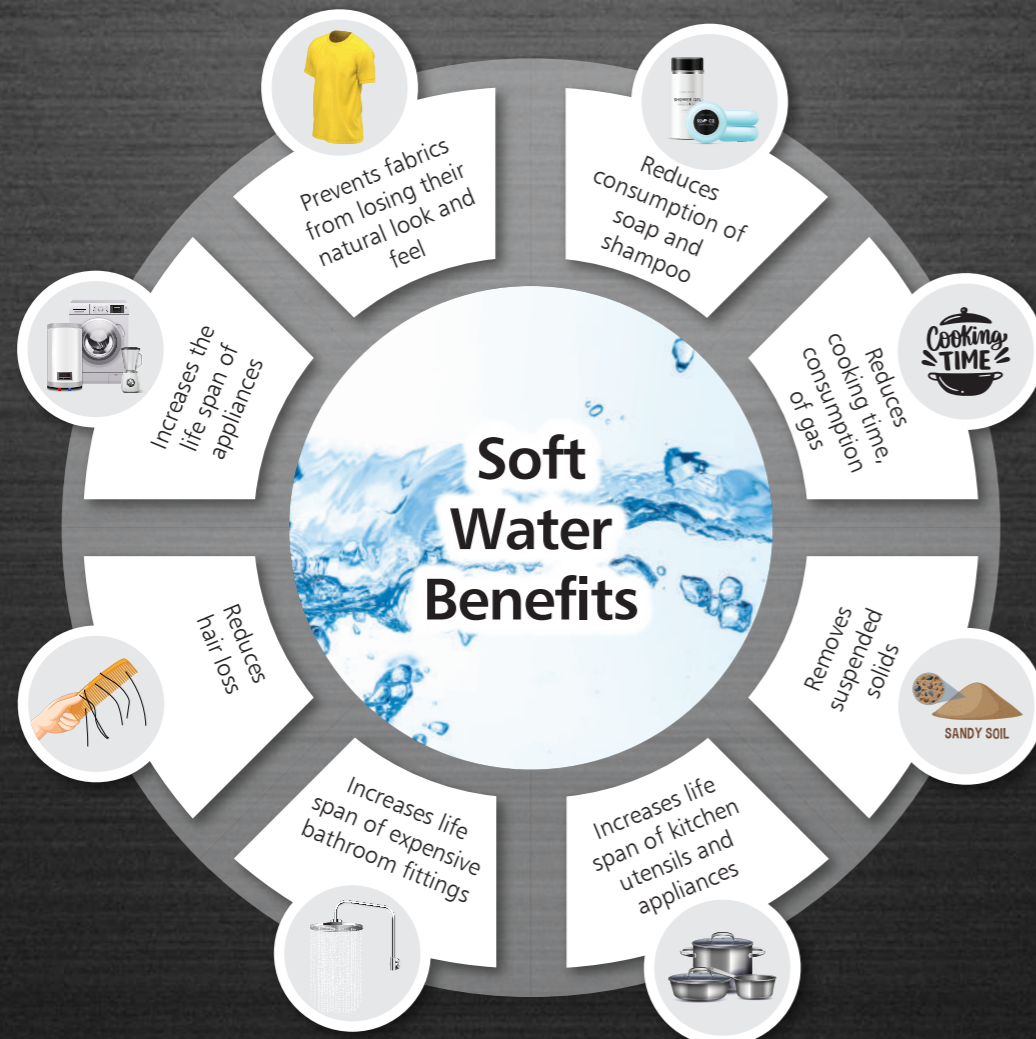
Experience the ultimate solution to your hard water concerns with A. O. Smith Water Softeners. By preventing hard water scaling, A. O. Smith Water Softeners extend the lifespan of your appliances, maintain optimal water flow in your plumbing system and preserve the pristine appearance of your bathroom fixtures. With soft water you can significantly reduce energy bills and increase the life span of your appliances.

A. O. Smith Advantage

Key Features

- ✓ Superior Strength & Durability: Fiber-reinforced polymer valve body for superior strength and durability, non-corrosive and UV-resistant
- ✓ State of the Art Multi Port Valve (MPV): Eliminates manual intervention during regeneration process
- ✓ Auto Memory function: Programming stored in memory will not be lost due to power outages
- ✓ On screen display and soft keys for programming at site
- ✓ FRP Vessel is light weight & corrosion resistant resulting in longer life
- ✓ Auto Regeneration: Time based and volume based regeneration
- ✓ Maximum working pressure of 6 bar
- ✓ Auto refill of brine tank
- ✓ Ease in serviceability

A. O. Smith Softener Benefits



CWS-25/CWS-40

Working Process of Softner

A. O. Smith Water Softeners provide the perfect solution for different types of water problems. During it's operation, A. O. Smith water softeners harness advanced ion-exchange technology facilitated by high-quality, long lasting resin to eliminate hardness. This ensures that you get soft water for your everyday needs.

Technical Specification

Model		CWS-40	CWS-25
Dimension	Dia	16 Inch	13 Inch
	Height	65 Inch	54 Inch
Flow Rate		4 m3/hr @15psi PD*	2.5 m3/hr @15psi PD*
Backwash Flow Rate (Valve Alone)		3.9 m3/hr	1.6 m3/hr
Inlet/Outlet Size		1" BSPF	1" BSPF
Mounting Base		2 ½ Inch-8 NPSM	2 ½ Inch-8 NPSM
Operating Pressure		2 - 6 Bar	2 - 6 Bar
Regeneration		Down flow	Down flow
Distributor Size		1.05 inch	1.05 inch
Brine Tank Capacity		200 Ltrs.	100 Ltrs.
Drain Size		1/2" NPTF	1/2" NPTF
Brine Size		3/8"	3/8"
Controller Operating Voltage		12V DC	24V AC
Recommended Media Volume (Ltrs.)		125*	50*
Regeneration Mode		Flow & Time based	Flow & Time based

Note: * System Flow rates are based on a velocity of 25 m/hr. | * Recommended freeboard - 30% to 50%. | • Input water conditions should be as per the specifications from the media manufacturers and application related | • A. O. Smith reserves the right to update specifications, change prices or make substitutions without prior notice as a part of continuous improvement

Certifications

NSF 44 - Tested and Certified by WQA to NSF/ANSI Standard 44

